



Shep-O-Gram

MARCH-APRIL 2016

Shep-O-Gram Editor

Sue Smith

smsmith50@me.com

GSDCMSP Officers

President

Peggy Simerson

715-248-4969

simcargsd@frontiernet.net

Vice President

Eileen Varhalla

evanhalla@aol.com

Secretary

Sarah Falk

316 Adams Avenue S.

Edina, MN 55343

sarahfalk4gsd@gmail.com

Treasurer

Diane Blasius-Brown

13305 Lakeview Dr

Burnsville, MN 55337

dbbrown4@yahoo.com

Board Members

Denise Gilbertson

Ann Jeddeloh

Rhonda Meath

Training Director

Verna Kubik

vmk4gsds@dishup.us

715-549-6365

Web

Bobby Moore

robertamoore2@mac.com

Membership Chair

Cindy Muehlbauer

cjmuehlb@gmail.com

Club website:

<http://www.gsdcmsp.org/>

On Facebook:

<https://www.facebook.com/pages/German-Shepherd-Dog-Club-of-Minneapolis-St-Paul/177231829018034?fref=ts>

Dogs Have Their Day at GSDCMSP Agility Trial



Jumping, weaving, racing, spinning--it was a festival of speed and dexterity at the club-sponsored AKC All Breed Agility Trial April 1-3. Handlers and their canine athletes competed in various levels of agility in both regular and preferred classes as spectators admired the maneuvers and cheered favorites at On the Run Canine Center in Ham Lake. German Shepherds were well represented at the contest!



In This Issue . . .

President's Message	2	Meet your Board: President Peggy Simerson	6
A Poem for the Season	2	Annual Banquet Highlights	7
Adventures in K9 Nose Work	3	Updates from GSD Rescue groups	8
Perspectives on Immunization	4	Membership Applications	9
On KMSP: Ron Halling and GSDCMSP	5	Upcoming Events	10
Product Recommendation: Back on Track	5		

President's Message:

Spring is here, and we all are anxiously awaiting warmer temperatures that bring green grass and time spent outside with our dogs without layers and layers of clothing to keep warm! Springtime gets us thinking about starting new projects, and I am sure many of you are thinking about new adventures that include your dogs! Please keep our Club in mind as you start new activities. We have many ways to participate with your dogs and/or volunteer to get to know more Club members! Agility trials are happening as I write this, and many of you will be attending and helping out. Thank you!

Our second session of obedience classes are underway, and Ron Halling's monthly Socialization and Obedience Workshops are now once a month through December, except for June-August where there may be outdoor classes offered if the right venue and dates present themselves. Ron's Group Walks are also happening once a month and were recently featured by Fox 9 News. A big thanks to Ron, Amber, all the helpers and his students for representing our great breed in a public venue with positive results! On April 16th, we had the Socialization and Obedience Workshop and the Spring Match for Conformation (AKC Sanctioned) and Obedience and Rally (for fun). Watch for pictures and results from these events in the Club's weekly email, on Facebook and the Club's website.

And, of course, we are in planning stages for our annual Specialty Show and are always looking for volunteers to help with the weekend's competitions in Conformation, Obedience and Rally Obedience. More activities are coming our way in August with the Minnesota State Fair, and we have now moved our GSD Fun Day to September! So, we have lots of activities to try, volunteer for and enjoy with our dogs. Happy Spring everyone!

For the love of the breed,
Peggy Simerson



A poem for the start of summer show season

Member Pam Magadance enjoys earning titles with dogs Torrey and Gigi. Pam provided this poem offering a look at how dogs might view the quest for "legs" toward titles. Enjoy!

The Very Sad Tale of a Multi-Appendaged Dog

By Helen Phillips

When I was born, I had four legs,
What happened, I DON'T KNOW!
Cause my mom said I just had one,
To someone at a show.

But that seems odd, 'cause way back
When I finished my CD,
She said, "My dear, you're very grand,
Now you have gotten three."

If those three legs were really mine,
And dogs require four,
Then you would think quite logically,
That I'd need just ONE more.

But mom says now I've got that one,
I still am lacking two,
And I'll need three more after that.
WHAT AM I GOING TO DO?

You start with four and then add three.
And add three twice again.
What shall I do with 13 legs
Is quite beyond my ken.

The mutt who lives next door to me
Just has four legs, I know.
They seem enough to take him
Every place he wants to go.

But since my mom's been bitten
By that thing call the bug,
She doesn't care how many
Extra legs I have to lug.

Well, that's how the Kibble Krumbles
When a blue blood's life you lead.
You start out looking like a dog
And end up as ----- A CENTIPEDE.

Adventures in K9 Nose Work

By Sarah Falk

Trial Day! My hands tremble a bit as I form the long lead into an organized loop of leather. Steadying, I reach down to unclip the lead from Manny's collar and affix it to his harness. "Are you ready?" I ask, and receive his standard reply: a high-pitched whine of excitement! His body stills as he waits for the release words-- permission to cross the line separating us from the



search area. "Let's find it!"

Confidently, he strides into the container search area filled with boxes and luggage and gets right to work searching for the hides! This is a team effort--he has the nose, but I need to watch his behavior, recognizing when he's found it and calling "alert" correctly within the time allowed. The game is on!

This is the sport of K9 Nose Work, a newer canine activity based on working detection dogs. Instead of searching for bombs, drugs, or other illegal and dangerous contraband, teams seek out an odor-scented Q-tip no larger than half of my pinky finger.

Four search elements are used at a trial: an Interior search, an Exterior search, a Vehicle search and a Container search. In

each search area, the Certifying Official has placed a set number of hides appropriate for the trial level, and each team has a set time limit to locate them correctly. This is called working to "source".

At the first trial level, there is just one hide in each search area and one odor used. In the trial level for which I'm currently training, the NW3, there could be up to three hides per search area, up to three odors used (birch, anise or clove or any combination). Additionally, the Interior Search contains up to three rooms, and each could contain zero to three hides. To earn a title, each competitor must correctly find the hides in the four types of search areas (Interior, Exterior, Container and Vehicles).

At a trial, each team has the same set time limit to locate the hide and call "alert". If the judge responds, "yes!" you reward your dog and praise him! If the judge says, "noooo, I'm sorry, it's over here..." you take your dog to where the hide is located and reward there. If you run out of time, the judge directs you to the hide so you can reward your dog. No matter what happens, the dog is rewarded at source.

Because each team is working to find the hide independently and against a time limit, competitors are more likely to think they are competing against themselves or against the clock rather than against each other. This creates a welcoming community spirit of support and camaraderie. As competitors re-enter the parking lot after their searches, they'll call out to each other, "so how'd it go?" to which the competitor will either respond with a thumbs up or a thumbs down.

Training is an exercise in patience and teamwork. Nose Work is one of few dog sports where the activity is mostly dog-directed. The human can't smell the odor, so the handler's job is to watch the dog and make sure the search area has been covered completely. The handler has to be able to distinguish between a dog that is working odor to source (to



pinpoint the exact location of the hide) vs. a dog that is working a hide but hasn't yet pinpointed the source. The handler also has to be able to know if the dog is hitting on a distractor in a container search (like food or a toy hidden in one of the containers), is simply interested in another dog's elimination, or is sniffing the slobber from the Newfoundland that ran two dogs before. Watching an experienced team is like watching a dance: the perfect synchronization between dog and handler.

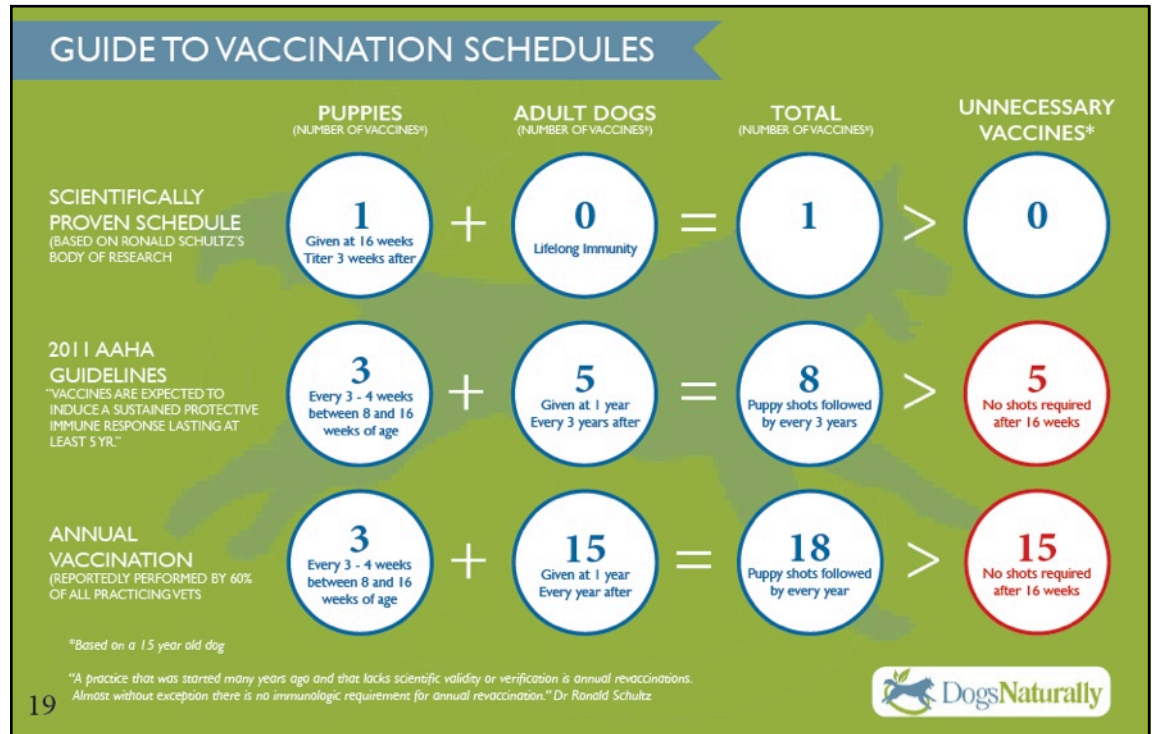
Since this sport came to be in 2009 from the National Association of Canine Scent Work (NACSW), several instructors have become certified by NACSW. There are several locations in the metro area that offer classes. Volunteering at a local trial is a great way to become familiar with the sport.

If you're interested in learning more about Nose Work, send an email to SarahFalk4GSD@gmail.com. I'll be happy to answer questions or invite you to come watch a class. It's a great way to have fun with your dog. Since the dog already knows how to sniff out something he's interested in, we're just training him to find something very specific--while training ourselves to become more in tune with his behavior. It's a win-win for all.

Vaccination frequency: Resources outlining two different perspectives

Spring is a time when many of us load up the dogs and make a trek to our veterinarians for annual canine preventive care including vaccinations. A growing number of health experts question “traditional” vaccination schedules and argue that less frequent immunization is actually safer for our dogs. In the end, you must make your own vaccination decisions guided by advice from your breeder and veterinarian. Included in this edition of the Shep-O-Gram is information from two resources to provide perspective. To the right is a graphic distributed free by

Dog’s Naturally magazine, which advocates less frequent vaccination, and below is an article from the American Kennel Club outlining recommendations from the American Animal Hospital Association.



Vaccinations for Your Dog: The Upshot

American Kennel Club *(Used with permission)*

Opinions differ over the necessity of some dog vaccinations and the timeframe for vaccinating your dog. Consult your vet about your dog's vaccinations.

The American Animal Hospital Association (AAHA) made headlines in 2003 when it published its vaccination recommendations. It suggested that a few vaccines are absolutely necessary, but some are only required in unique circumstances, and others should not be given at all.

The AAHA also recommended moving the "annual" vaccine to every three years. In 2006 they reconfirmed these recommendations. The AAHA panel agreed that four core vaccines should be administered to every dog: Parvovirus, Distemper, Rabies, and Adenovirus. The AAHA assigned Parainfluenza, Bordetella, and Lyme disease to the noncore group. These are only to be used where exposure to the disease is likely.

If this weren't controversial enough, they stated that some vaccines are not recommended. For example, too few dogs succumb to coronavirus to justify vaccination. Even when the disease does occur, it is mild and self-limiting.

Leptospirosis vaccines have a low efficacy (less than 75 percent), and most do not provide protection against the strains that currently cause disease in dogs. Giardia vaccines are also not endorsed by the AAHA. Though they may prevent shedding of the organism in the urine, they do not prevent infection.

Frequency of revaccination has been a hot topic for several years. The requirement for rabies has not changed. They are usually given once to puppies, boosted a year later, and then administered every three years.

The distemper combination vaccines are different. Some veterinarians are uncomfortable extending the vaccine interval past the traditional one year. Others embrace the AAHA recommendation to give the vaccine every three years.

Protection from Bordetella only lasts 9 to 12 months, so it should be done annually or more often if there is a high risk (such as attending dog parks or doggie day cares).

Halling and Club featured on KMSP news in March

When a couple of well-mannered German Shepherds are spotted walking with their owners in a public place like the trail around Lake Harriet, it's wonderful public relations, dispelling erroneous notions of GSDs as aggressive "land sharks." When the number of German Shepherds increases to ten, then 18 and more, well, then it becomes news.

Trainer and GSD advocate Ron Halling's monthly walks for GSD owners and their dogs around various Twin Cities locales recently caught the attention of the KSMP news team. Anchor Kelcey Carlson and camera crew attended the March walk as well as Halling's most recent GSD workshop, and on March 24 aired a feature about Ron and the GSDCMSP. The story was broadcast multiple times that evening and is still available on the station's website.

Ron's philosophy on the value of training was evident both in the story's focus and the complimentary tone of the piece. Such positive publicity helps the breed and is a boon to our Club as well. Secretary Sarah Falk reported that following the story's air date, "likes" on the Club's Facebook page increased substantially, as have calls to her from people interested in learning more about the Club. Kudos and thanks to Ron and Ann Halling and their helpers!



Product Recommendation: *Back On Track*

By Rhonda Meath

It never occurred to me before. Why would I ever have my German Shepherd Dog wear a jacket? GSD's generally don't wear coats, jackets or sweaters. They don't need to. They have their own coats. Right?

A lot of my friends' agility dogs were wearing the Back On Track jackets. But it wasn't until after my dog SMITH recovered from a soft tissue injury in his upper left hip last year that I decided on checking the why and what benefits these jackets had to offer.



Our dogs are athletes, so warming them up before their runs is very important. Their muscles need to be warm, reducing the risks of strains or injury. Just as important is cooling them down after they have completed a fast-paced course filled with obstacles. The Back On Track jacket keeps your dogs muscles warm.

How it works:

Ceramic particles are fused into the fibers. When heated, the ceramic radiates heat back into the polyester fibers. Heat radiation increases blood circulation; the increased blood circulation in the tissues helps relieve muscle tension and improve performance. The heat supply is the dog. By wearing the jacket, the dog is keeping his own muscles warm.

This is a great company that offers many different types of products for humans, dogs and horses. I wear the socks every weekend, keeping my feet and muscles warm. SMITH wears his jacket before and after every run.

Check out all the Back on Track products, including the jacket SMITH models in the photo, at <http://www.backontrackproducts.com/>

Get to Know your Board: *Peggy Simerson, President*

A member of the GSDCMSP since 1997, I joined the Club with my husband, Craig Carson, before we got our first GSD, American Champion Jecoda's Dutch Chocolate, CD, from Connie and Dave Bissonnette. We were looking for "something to get involved in".... Little did we know at the time how involved we would become! We were looking for a companion, but Connie and Dave saw something in us and entrusted a show quality puppy to us! Dutch was our first champion, and we became very involved with the breed and the Club. I started helping with trophies for our specialty shows within the first two years and have been Trophy Chairman for over 16 years. I served on the board for two terms. In my early years with the Club, I purchased the Annual Award plaques and also served as Match Chair.

In our early years in GSDs, we would take our dogs with us to the North Shore hiking. Nowadays, we hang out around home, love the outdoors and take short scenic rides on our Harleys in the countryside around our home near Star Prairie, Wisconsin. No, we don't have side cars for the dogs.... sigh.... Most of our travels away from home are dog related, aka dog shows. It has been said that Craig and I cannot exist in the same place at the same time, as we take turns traveling to shows and taking care of the kennel. However, on a few occasions a year, you may spot us TOGETHER!

Our kennel is called SimCar, combining my last name of Simerson and Craig's last name of Carson, as this is very much a joint venture and we couldn't do it without the support of each other. We started our breeding program in 2001 with the mentorship of Connie and Dave Bissonnette, aka Jecoda Kennels, when we moved our dogs to 20 acres near Star Prairie, Wisconsin. We breed a few litters each year. We are signers of the Breeder's Code of Conduct, members of the GSDCA and AKC Breeders of Merit. To date, we have owned, bred, and/or trained 20 Champions and two Register of Merit Dams. Four of our first Champions were from our Jecoda dogs, and the rest were home bred. We support the National Club's Futurity/Maturity Show system, which is a breeder's showcase,

with progeny that have successfully placed in those shows with some good wins including Reserve Futurity and Maturity Winners, and Best of Opposite Maturity Winners. Our puppies are in homes in the community as well as across the country. Although we concentrate on conformation championships, some of our dogs are therapy dogs and obedience dogs in their companion homes. Both Craig and I have participated in other venues. Craig competed in Obedience with our first dog, Dutch, completing his CD, and I played with my girl, Fire, in some agility courses. I use my agility tunnels for puppy socialization and "grandma" dogs,--older mamas no longer having puppies--to help raise puppies!

Part of our breeding program is education. It is important to provide ongoing support to new puppy owners and be available to answer questions for the life of the dogs you breed. Our contracts with new owners include first right of refusal, which means that if for any reason an owner can no longer care for his or her dog, the dog comes back to us for the rest of its life or for us to evaluate and then find another loving home.



Annual Banquet 2016: Food, Fun and Our Newly-Elected Board

Lake Elmo Inn, Feb 6, 2016



2016 Board, left to right:

Rhonda Meath (Board), Ann Jeddeloh (Board), Peggy Simerson (President), Sarah Falk (Secretary), Eileen Varhalla (Vice President), Diane Blasius-Brown (Treasurer), Denise Gilbertson (Board).



RESCUE UPDATES

SAVING SHEPHERDS OF MN

Saving Shepherds of MN has been busy! We just took in our 17th dog since we founded our rescue less than four months ago, and we have placed 12 dogs into their loving forever homes so far. Our dogs have come to us from local shelters and Humane Societies, from vet clinics as strays, Humane Societies in Nebraska, Missouri and Kansas and as far away as a shelter in Tennessee. We have also taken in some owner surrenders. Mya was surrendered for incontinence issues that her owners could no longer afford vet care for.

We had her examined at the U of M and modified her daily schedule. She is now living a happy life in her new home. Brannigan was captured in a live trap in Tennessee after being a feral stray dog for at least eight months. We had him flown to Minnesota, along with Gracie, and welcomed them both into our rescue. Brannigan is currently being rehabilitated and learning what it's like to live in a house with people. Arlo came to us after he was seized by a Sheriff's Department as part of an animal cruelty / neglect case. He had never been to the vet and was extremely underweight. He has since been vetted and is now in his forever home putting on some weight. Thank you for supporting us in our mission to rescue, rehabilitate and rehome these amazing dogs!



The Saving Shepherds of MN rescues and their new owners / fosters.

FAERIELAND RESCUE INC

A very successful first fundraiser "A Growling Good Time" was held at 56 Brewing in Minneapolis on Saturday March 19th. Many people contributed to ensure that this event was a success, and I would like to offer my sincere thanks to all, with a special mention to Kerry & Kale Johnson (owners of 56 Brewing) and their German Shepherd,



Zeus, for hosting us; Riff's Smokehouse BBQ for supplying absolutely fabulous pulled pork sandwiches and BBQ sauce; our volunteers; donors and supporters including Roberta Moore, Cyndi Romuldi and our working Board of Directors. This will be ANNUAL event, so watch for the 2017 date.

Fundraising events like "A Growling Good Time" along with generous donations are critical to allow the rescue to do what we do best--rehabilitate and place dogs in loving furever homes. I am therefore very pleased to report that a total of six German Shepherds have been adopted since February 1st, and all are adjusting well to their new environments. There are currently seven German Shepherds at the rescue, and if you would like to help with their transition to forever homes, tax deductible donations can be sent to

FaerieLand Rescue Inc, PO Box 213, Anoka, MN 55303. Additional ways to support FaerieLand Rescue:

Woof Trax www.wooftrax.com Download the app on your phone, create an account, log in, select our rescue and walk. Do this a couple of times a week and our rescue will receive credit and a donation.

Amazon Smile – always start at <http://smile.amazon.com/> and Amazon will donate 0.5% of the price of your eligible AmazonSmile purchases to the rescue

Schwans: <https://www.schwans-cares.com/> when checking out be sure to give the Campaign ID # 26723 – FaerieLand Rescue so we receive 20% of the sales for the first 45 days and 5% of the sales for the balance of the year.

Check out our newly created-fabulous website by Moore Art Design & Web. www.faerielandrescue.org



The German Shepherd Dog Club of Minneapolis and St. Paul

MEMBERSHIP APPLICATION

Applicant Name (Please Print) _____ Date: _____

Address: _____ Phone: _____

City: _____ State: _____ Zip: _____

Email: _____

Please indicate the name(s) of any other dog clubs you belong to: _____

Number of German Shepherds you own: _____ Number of Litters bred in the last two years: _____

PLEASE INDICATE (X) THE AREAS IN WHICH YOU MAY BE INTERESTED:

OBEEDIENCE: ☐ RALLY OBEEDIENCE: ☐ CONFORMATION: ☐ TRACKING: ☐ AGILITY: ☐
HERDING: ☐ BREEDING: ☐ OTHER: ☐ Please specify: _____

I would be interested in helping with the following activities:

Specialty Shows & Trials ☐ Fun matches ☐ Programs ☐ Newsletter ☐
Training Center ☐ Hospitality ☐ Advertising ☐ Club Office ☐

I HEREBY MAKE APPLICATION TO THE ABOVE CLUB AND AGREE TO BE GOVERNED BY ITS CONSTITUTION AND BY-LAWS.

APPLICANT SIGNATURE: _____ DATE: _____

MEMBER PROPOSED BY: _____

This application must be accompanied by a check for one year's dues and signed by a current club member sponsor. Dues are \$25 for a single membership or \$30 for a couple. Please make checks payable to the GSDC of Mpls & St. Paul. Return this application at a training class or club meeting or mail with check to:

Cindy Muehlbauer, GSDCMSP Membership, 18801 Watervest Street NW, Anoka, MN 55303

Please Note: All applicants must attend two sponsored events or meetings within one year of their application date. At the meeting following the second meeting attended, the applicant will be announced as a member, whether they are in attendance at that meeting or not. Membership meeting dates are listed in the club newsletter and published on the club website, www.gsdcmnp.org. Dues shall be assessed on a yearly basis from October 1 through September 30. Membership dues for applicants that become members between July of a given year and the December membership meeting date of that year will be waived for the following year.

If you have any questions, please contact the membership chairperson (612) 219-9374 or cjmuehb@gmail.com

To be completed by Membership Chair:

Date Dues Paid: _____ by check ☐ Cash: ☐ Placed in club cash box: ☐ Mailed with Application: ☐
1st meeting date: _____ 2nd meeting date: _____ Applicant's name added to membership list: ☐



German Shepherd Dog Club of America, Inc.

Application for Membership & Renewal Form

There shall be two types of memberships:

- Regular Membership:** Minimum age of (eighteen) 18 years. Must be in good standing with AKC. In addition, applicant (and all renewing members) agrees to abide by the GSDCA by-laws and the Rules and Regulations of the American Kennel Club. Two endorsements of current members must be provided by new applicants. Applicant's name, along with their sponsors, will be published in the Review. Provided no objections have been filed within 30 days of publication in the Review, applicant will be rolled in writing by the Corresponding Secretary or Membership Chairman that he/she is eligible for all privileges including the right to vote.
- Junior:** At least (nine) 9 years of age and not more than (eighteen) 18 years of age and shall subscribe to the same criteria as Regular Membership with the exception of the requirement to pay dues. Junior members cannot vote, hold office, or serve on committees other than junior committees.
- If sponsors (endorsees) are unavailable, applications may be submitted without signatures. Per GSDCA policy, they may be signed by the current GSDCA President & Membership Chair.

Mail form and dues to: GSDCA Membership, Danja Karloff, 2136 Mt Pleasant Road, Chesapeake, VA 23322

Phone: 757-462-3966 Email: GSDCAmembers@aol.com

If you would like to apply and pay online & pay with a credit card, please go to <http://gsdca.org/join-the-gsdcaapply-online>.

Select Membership Type:

- ☐ **NEW** Single Membership (includes a GSD Review Subscription) (\$36.00) **
- ☐ **NEW** Family Membership (includes a GSD Review Subscription) (\$66.00) **
- ☐ **Renewal** Single Membership (includes a GSD Review Subscription) (\$66.00)
- ☐ **Renewal** Family Membership (includes a GSD Review Subscription) (\$100.00)
- ☐ **Junior** Membership (no charge) (Does not include Review Subscription)

** This is a special offer for new members only. Offer expires 12/31/2014. Review delivery option prices still apply for all memberships.

Select GSD Review Delivery:

- ☐ Standard US Delivery with label on rear cover (no charge)
 - ☐ Standard US Delivery in a POLY wrapper (bag) (+ \$5.00)
 - ☐ 1st Class US Delivery (bag included) (+ \$36.00)
 - ☐ Delivery Outside the US (+ \$24.00) (*required for non-US)
- Membership \$ _____ + Delivery \$ _____ = Total \$ _____
- (NOTE: Former GSDCA members are eligible if their membership has lapsed for at least 12 months prior to application.)

Dues are NOT tax deductible. Please note that all administrative work for the GSDCA is done by volunteers and it may take up to 60 days to completely process your membership application. Enclose your dues payment for the amount shown with the membership type you have selected above with this application. Checks should be made out to: German Shepherd Dog Club of America.

Membership Information (please print)

What other regional/national dog organizations do you belong to?

Last Name: _____ Why are you interested in joining the GSDCA? _____

First Name: _____ ** Date of Birth: _____

(** REQUIRED for Juniors)

Middle Initial: _____

Address: _____ What Activities do you enjoy with your GSD? (you may choose multiple items) ☐ Agility ☐ Conformation ☐ Herding ☐ House Pet

City: _____ State: _____ ☐ Obedience ☐ Rally ☐ Schutzhund/Working Dog Sport

ZIP/Postal Code: _____ Country: _____ ☐ Tracking ☐ Other

Telephone: _____ Email: _____

For FAMILY Memberships, provide 2nd member information. (Family membership is defined as 2 people living in the same household (principal & one (1) other person). Endorser 1 Name/Address: _____

Endorser 2 Name/Address: _____

Last Name: _____

First Name: _____

Middle Name: _____ Email: _____ Signature: _____ Date: _____

Note: GSDCA members agree to abide by all AKC and GSDCA rules and policies

CLUB CALENDAR

Regular Classes are scheduled for the following times unless otherwise noted. Please remember that the calendar is subject to change and the most current information can be found on our website. Classes and meetings are held at Animal Inn, Lake Elmo, MN

- 6:00- 6:45 Puppy Socialization 1 and 2
- 6:00 - 7:30 Rally Obedience
- 7:00 - 8:00 Beginner's Obedience
- 8:00 - 9:00 Intermediate/Novice Obedience
- 7:30 - 9:00 Conformation- All Ages
- 9:00 - 10:00 Intermediate/Novice Obedience

UPCOMING EVENTS

- April 15: Board Meeting 7-8:30 p.m.
- April 16: Socialization and Obedience Workshop
- April 16: Spring Match 5 p.m.
- May 14: Socialization and Obedience Workshop
- June 3: No Training
- June 10: No Training
- June 25-26: GSDCMSP Annual Specialty Show: Conformation, Jr. Handling, Obedience and Rally Obedience Specialty Show (Dakota County Fairgrounds, Farmington)

SHEP-O-GRAM

Shep-O-Gram
N7925 986th Street
River Falls, WI 54022

