



Shep-O-Gram

German Shepherd Dog Club of Minneapolis/St Paul

January 2011

Shep-O-Gram

Editor Julie Swinland

(651) 457-5459

Blackforestgsd@msn.com

GSDC MSP Officers

President Mada Skare

612-619-0935 cell

wildfanz@comcast.net

Vice President

Julie Swinland

Blackforestgsd@msn.com

(651) 457-5459

Secretary Jill Myers

651-429-0789

4015 Hazel Street

White Bear Lake, MN 55110

Jillmyers12@msn.com

Treasurer Roger Salava

163 Skyline Drive

River Falls, WI 55042

715-426-6467

rogersalava@live.com

Board members

Linda Salava

Ginny Altman

Lisa Marie Fortier

Training Director

?

Web Guy

Dave Bissonette

Jecoda@dishup.us

It is the new year and time for trying new things. I am reminded of a quote which has many versions. I selected the Maxine cartoon version here:

"Life should NOT be a journey to the grave with the intention of arriving safely in an attractive and well preserved body, but rather to skid in sideways, chocolate in one hand, martini in the other, body thoroughly used up, totally worn out and screaming WOO HOO what a ride!"

Isn't that a fantastic image? I especially like the chocolate part. You may wonder what I am getting at here. It is a time of resolutions and I would like to ask you to try something new. You are a member of a large and growing club. We all love German Shepherds. We all have talents and abilities, and everyone has something to contribute. I am not asking for money, (I will leave that to our experts, Holly and Laurie), but I ask that you give a little of your time to the club to help in whatever way you can. I know how hard it is to volunteer. We don't want to upset our schedules, we have jobs, families, commitments. But don't we also enjoy many of the club activities, matches, specialty shows, pot lucks, herding events, the GSD Fun Day, State Fair Demo Day, and other activities? All of our activities take people power. If a few more people would help, each person would have to do less. Think about how many people are in our great club, 160 or so, and how many of those people help on a regular basis? There is a core of a very few and others help as they can. Can you be one of those others? I am not asking for a huge commitment, just an hour or two here and there. Let's all be able to say "Wow what a ride" at the end of the coming year and really be a part of that ride.

We are ending our "ride" from last year with our annual banquet at Joseph's in St. Paul on January 29. The reservation form is on page 11 of this issue. Reservations are due by January 20. Please get them in to Jan Anderson. It is a time to celebrate the victories of our dogs and our club. It will be a fun time. We will have a slide show going too, so if you have any event pictures from the last year send them to Bobbie Moore, robertamoore2@mac.com, Also send Bobbie a picture of your dog if you are receiving an award for a new title. Remember to bring an 8X10 to display on the awards table if you are receiving an award.

Good luck to you in 2011. I hope to see you at the banquet. Remember to vote for the new officers, ballots will be out soon.

Julie Swinland.
(651) 457-5459
Blackforestgsd@msn.com

SOG Due Date
Feb issue - Jan 21

January 29 Annual Banquet & meeting at Joseph's in St Paul

JOIN THE GSDC OF AMERICA TODAY!

German Shepherd Dog Club of America Membership Application

Requirements: Minimum age of 18 years. Must be in good standing with AKC. Membership includes subscription to *The German Shepherd Dog Review*.

Membership Type: (circle one)
 Single \$66.00 Family* \$100.00

*Dues are not tax deductible * Family is defined as same household or significant other.*

Make checks payable to GSDCA (Outside the US add \$24.00)

Name _____

Address _____ City _____ State _____ Zip _____

Phone (s) _____ Fax _____ Email _____

I (we) hereby make application to the above Club and agree, if accepted for membership, to abide by its Bylaws and the Bylaws of the AKC. Upon application I will be eligible for all privileges except the right to vote. Thirty days after my name is published in the Review, provided no objections have been filed I will be granted the right to vote.

Signed _____

Mail to: Gail Hardcastle, 49 Lakeview Road, White Salmon, WA 98672
hardcastle@starband.net

Signed _____

This is the membership application for the German Shepherd Dog Club of America. For the application for our club see the club web site or pick one up at training

Dog Care: Top 10 Ways to Keep your Dog Forever Young

Dr Debra Primovic reprinted from www.articlebase.com

There is a large disparity between the life spans of dogs and humans. After having loved a pet and lost one, it seems unfair. The best we can do is to keep our friends as healthy as possible and “forever young.” Here are My Top 10 Ways to Keep Your Dog Forever Young:

1. **Know When Your Pet is “Old.”** The time when your dog is considered a “senior” depends largely on his or her breed and size. According to Dr. Johnny Hoskins in *Geriatrics and Gerontology of the Dog and Cat*, small breed dogs (less than 20 pounds) are in their senior years around nine to 13 years of age. Medium sized dogs (21 to 50 pounds) around nine to 11. 5 years; large breed dogs (51 to 90 pounds) around 7.5 to 10.5 years and giant dogs (more than 90 pounds) between six and nine years. In general, smaller breed dogs live longer.
2. **Wellness Exams.** When your pet is considered a senior, you should bring your dog for regular geriatric examinations. These examinations help identify early diseases or problems in older pets. Exams should include a history and physical examination with evaluation of the teeth, listening to the heart and lungs (by stethoscope), abdominal palpation (feeling of the abdomen) and inspection of your dog’s ear and eyes. Weight monitoring, parasite check (fecal examination) and blood work and urine tests are also often recommended. Other tests may be indicated depending on your pet’s symptoms.
3. **Watch for Illness.** Careful observation at home is extremely important. By nature of survival, dogs are very good at hiding their illness until it is too late. Take time to examine your pet. Feel him or her for masses and indications of weight loss or loss of musculature. Things to watch for include changes in water consumption or patterns of urination, poor appetite, weight loss or gain, coughing or difficulty breathing, changes in activity level, vomiting, diarrhea and skin lumps or masses. If you have questions or concerns about your pet, play it safe and have him or her evaluated by your veterinarian. Early diagnosis is vital to the success of treatment.
4. **Weight Control.** Obese dogs have shorter life spans than non-obese dogs. Obesity may lead to a number of health problems. Excess weight puts excess stress on your dog’s heart. When the heart doesn’t function properly, other organs may suffer including the brain, lungs, liver and kidneys. Over

time, these problems may become severe enough to cause life-threatening conditions.

5. Keep Close Tabs. In general, “outdoor” free roaming dogs have shorter lives than indoor animals. Infectious diseases, poisonings and trauma are common killers. Senior dogs have decreased reflexes and may not see and hear as well as they used to. This makes them vulnerable to outside dangers such as predators or cars. Keep dogs on leashes or in fenced-in yards.

6. Monitor Your Environment. Keep poisons up and out of your dog’s reach. Common toxins include antifreeze, rat poison and slug bait. Keep trash out of reach. Don’t count on your pet to “know better.” It doesn’t take a large amount of a dangerous substance to make your dog seriously ill.

7. Nutrition. Feed your pet a premium high quality diet supplements such as Hill’s Science Diet®, Iams® or Eukanuba®. Feed low fat and high fiber foods since high fat and/or low fiber foods are thought to decrease life expectancy. Minimize treats and make them nutritious and low in calories. Air-popped popcorn is often a good treat for dogs. With your veterinarian, you should discuss the merits of a diet formulation for your senior dog.

8. Exercise. Exercise helps to maintain a healthy body weight, strengthens joints and muscles and provides mental stimulation for your dog.

9. Spay and Neuter. Spayed and neutered dogs tend to have fewer health problems. Spaying is the removal of the ovaries and uterus. Without these organs, ovarian cysts, uterine infections and cancer of the reproductive tract are no longer a concern. Studies have shown that dogs spayed before puberty have a significantly lower chance of developing breast cancer than unsplayed dogs, or dogs spayed later in life. Health problems that can be associated with birthing are also eliminated with spaying. Neutering is the removal of the testicles. Without these organs, testicular cancer is no longer a concern and the risk of prostate problems is reduced. In addition, the desire to “wander” is diminished, which lowers the chance of your dog running away and suffering trauma, such as being hit by a car.

10. Mental Stimulation. Provide your pet with toys, games and quality time. Most pets are never too old to play. Encourage mental stimulation. It is never too late to teach old dogs new tricks. Follow these top 10 tips, and you’ll keep your dog forever young.

Retrieved from <http://www.articlesbase.com/pets-articles/dog-care-top-10-ways-to-keep-your-dog-forever-young-103575.html>



winter photos courtesy of Lindenhill

GSDC MSP 2010 In Review



2010 Banquet
Yvonne received a lifetime membership



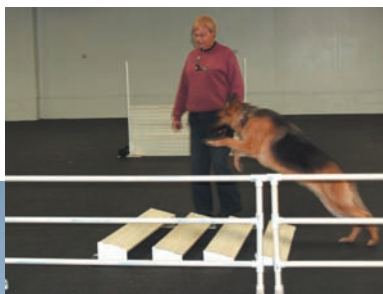
Spring match



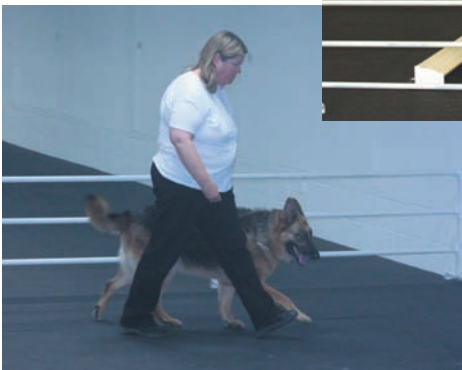
GSD Fun Day at Verna's



Herding Fun Days



Obedience workshops



2010 In Review

The specialties at
our new location in
Farmington



Herding trials in Pine
City



Fall match

2010 In Review



State Fair Demos



December potluck



Christmas photos

Helen recieved the Connie Beckhardt Award



German Shepherd Dog Club of
Minneapolis/St Paul
November Board Minutes
November 06, 2010

Mada Skare, President. Julie Swinland, Vice President
Jill Myers, Secretary, Roger Salava, Treasurer, Linda
Salava, Board (3 year term), Ginny Altman, Board (1 year
remaining)

Board Members absent: Lisa Marie Fortier, (2 years
remaining)

This month's meeting was held at Perkins in Maplewood.

President called the meeting to order at 10:46am.

1 President's Report –

- Discussed presentation for Helen's "Connie Beckhardt" award either at the December members meeting or the annual banquet.

2 Vice President's Report – none

3 Secretary's Report –

- The minutes of the last board meeting were emailed to the members and posted to the website.
- Paperwork for the 2011 Specialty Show has been submitted and fees paid.

4 Treasurer's Report –

- Roger Salava reported that the balance for the money market account is \$5,710. There is still \$940 outstanding in member dues and trophy donations.

5 Membership Report –

- Linda Salava reported there are 173 current members including applicants. Linda will contact the applicants to invite them to attend the December pot luck.
- Discussion took place regarding out of state members. It was agreed attending a meeting via conference call counts as meeting the membership requirements.

6 Shep O Gram and Website – Julie Swinland has December's issue halfway completed. She would like to encourage members to submit articles of interest for publication.

7 Fun Match –

- Kathy Duvall and Jan Anderson are co-chairing the November 19th match. Roger Salava moved that \$100 be approved for the food budget; the motion was seconded and passed unanimously.

8 Training Director –

- Ron Halling's November 20th workshop will be held at Verna Kubik's this month.

9 2011 Futurity & Specialty Show -

- Additional classes per Verna Kubik may be added to obedience i.e. beginner novice, grad open; to be discussed and recommended at November's member meeting.
- An amateur futurity/maturity judge needs to be selected. This can be a judge, provisional, handler, club member breeder or any exhibitor. The parent club will only cover 1 day motel and meals if absolutely necessary.

- We are still seeking a 2nd obedience judge in addition to Karen Anderson.

10 Herding Trial -

- Verna Kubik will have an expense and income break down at the member's meeting. Preliminary invoices indicate a nice profit was made.

11 Banquet –

- Jan Anderson will be chairing the committee. Possible locations are Joseph's Grill & Tartan Park. Pricing will be presented at the November meeting.
- The Banquet is scheduled for Saturday January 29th at 1:00pm.

12 Old Business – none

13 New Business –

- Sheila Metz has expressed interest in heading a Charitable Events committee for future club donations.
- Linda Salava mentioned grants for rescue groups are available from the parent club. She will investigate this further.

Meeting adjourned at 11:45am

Next Board meeting:

Tentatively Saturday December 4th.

Jill Myers, Secretary

Membership Meeting of

**The German Shepherd Dog Club of Mpls & St.
Paul**

November 17, 2010

The meeting was called to order at 8:30

Reports of the Officers

a. President – Mada Parnell

Congratulation to our club for all of the wins at the national. We have a large club 170+ members however we are having a problem getting volunteers

b. Vice President – Julie Swinland

We have new member applicant Daphne Hereford attending via telephone

c. Secretary's Report – Mada Skare

i. Minutes – The minutes of the board and last meeting were emailed

and posted to the website and Shep O Gram. There were some small

corrections. Paul moved we accept the minutes as

Nov Membership Meeting Continued

corrected,

it was 2nd and passed.

d. Treasurers Report – Roger Salava

As of 10/19 – Money Market \$5,710.49, Checking \$8,925.63

Committee Reports:

e. Membership Report – Linda Salava

We have 1 new member applicant - Daphne Hereford attending via telephone

Linda moved we make the presentation of the Connie Beckhardt award to Helen at the Dec potluck, it was 2nd and passed.

f. Fun Match – Mada Skare

Kathy DuVall and Jan Anderson are in charge; its 11/19. They need donations for the silent auction and potluck

g. Shep O Gram and Website – Julie Swinland

Send any articles to Julie

h. Training Director – Sheila Metz

i. Training Workshop – Nov 20 – Ron Halling at Kubistraums

i. 2011 Futurity & Specialty Show – Verna Kubik

i. Verna moved we add the following non-regular classes to the show:

Beginner Novice, Grad Open, Amateur Handler. It was 2nd and passed

ii. Need an amateur futurity judge. There were names given to Verna, she will either contact them or give them to the parent club to contact as the case may be.

iii. Futurity Ads – Kelly Knight is in charge of ads – if we get ads and they list our club/region our club can earn money. We need someone to solicit for this – Sharon Todoroff volunteered.

iv. Show Secretary – We still need a show secretary – contact Verna if you are interested. She will help with every aspect of this position.

j. Herding Trial – Verna Kubik

The net profit of the herding trial was 1688.62. Thank you to Verna Kubik for leading such a great event.

Verna mentioned that she will not be able to chair next year with everything on

her plate for Futurity and show. We need a volunteer for to chair next year.

Old Business

k. Nominating Committed – Bill Duffy – All officer positions and 1 board position are available. Please let Bill know if you are interested in running.

l. Awards Banquet – Linda Salava – Jan 29, 1-5. We have 2 options –

Tartan Park \$23-\$24 per person, Josephs Grill \$18 per person. Linda moved we have the banquet for Josephs's Grill.

Announcements:

Reminder: No training 11/26, 12/24, 12/31.

The meeting was adjourned at 8:55

**German Shepherd Dog Club of
Minneapolis/St Paul
December 10, 2010**

Board Members: Mada Skare, President
Julie Swinland, Vice President Jill Myers, Secretary
Ginny Altman, Board (final year)
Roger Salava, Treasurer, Linda Salava, Board (3 year term) Board Members Absent:
Lisa Marie Fortier, Board (2 years remaining)

The President called the meeting to order at 7:48pm

President's Report:

Mada presented the Connie Beckhardt Breeder's plaque, a flower basket and a box of candy

to Helen Miller Fisher. Helen had been nominated for the award by the GSDCA at the 2010

National in Utah. Helen was most appreciative and it was well deserved.

Vice President's Report: None

Secretary's Report:

The Board Meeting minutes were emailed, November Member Meeting minutes have since

been emailed as of this writing.

Sherry McKinnon sent a card to the club thanking the club for the opportunity to judge at the

November Fun Match. She stated that we should be proud of our dogs as every one had an outstanding temperament.

Treasure's Report:none

Membership Committee:
Several new members have applied/completed the 2 event attendance requirement.

Fall Fun Match:
Thank you to Kathy Duvall & Jan Anderson for co-chairing a successful November Fun Match.

Match results and pictures are included in the December SOG.

Shep-O-Gram & Website:
Send articles of interest to Julie Swinland.

Training Director:
New Puppy Obedience and Beginner Obedience classes will start on 1/7/10.

A new training director is needed for 2011. Sheila Metz will mentor as much as needed.

Contact Sheila or Mada if interested.

2011 Specialty/Futurity:

Applications have been submitted to the AKC, all 4 judges have returned signed contracts,

and letters from the Anoka/Cambridge clubs have been submitted to the AKC relinquishing

GSD entries on the overlapping days of our show.

Ginny Altman moved that the club submit an ad to the Futurity Catalog not to exceed \$200;

the motion was seconded and passed unanimously.

Herding Trial for 2011:

Zoa Rockenstein has volunteered to chair the 2011 Herding Trial. Thank you Zoa!

Mike Metz moved that 2010 budget be used until a new budget is proposed in June or July;

the motion was seconded and passed unanimously.

Nominating Committee:

Bill Duffy nominating committee chair presented the slate of nominees: President - Julie Swinland,

Vice President – Eileen Varhalla, Secretary – Chris Duffy, Treasurer – Roger Salava,

Board Member (3 year term) – Ginny Altman.

Mada opened nominations for President, no additional nominations were received, Craig Carlson

moved to close nominations for President; the motion was seconded and passed.

Mada opened nominations for Vice President, no additional nominations were received,

Craig Carlson moved to close nominations for Vice President; the motion was seconded and passed.

Mada opened nominations for Treasurer, no additional nominations were received, Verna

Kubik moved to close nominations for Treasurer; the motion was seconded and passed.

Mada opened nominations for Secretary, no additional nominations were received,

Craig Carlson moved to close nominations for Secretary; the motion was seconded and passed.

Mada opened nominations for 3 year term Board Member, no additional nominations were

received, Craig Carlson moved to close nominations for 3 year term Board Member; the

motion was seconded and passed.

Annual Banquet:

The Annual Banquet will be held at Joseph's in St Paul on January 29th. Get your reservations

to Jan Anderson.

Meeting adjourned at 8:13pm

Jill Myers, Secretary



Canine hypothermia by Maria Devore Reprinted with permission from the author

December 26th, 2008 3:57 pm MT Hiking, snowshoeing, skijoring . . . these are just a few outdoor winter activities that you can enjoy with your dog. Whether or not you choose to bundle your dog in a coat and/or boots, be aware of the symptoms of hypothermia. You will have no problem recognizing when you are too cold, but the indications are subtler, and unvoiced, in dogs.

Hypothermia occurs when the core body temperature falls below the normal range (101-102 degrees Fahrenheit in dogs). People reduce heat loss by adding layers of clothing, seeking warmth, or eating. A dog's only conscious mechanism to get warm is by seeking shelter from the cold.

There are three stages of hypothermia, with respective symptoms and danger levels.

- 1) Mild: 96-99 degrees F. Your dog will shiver uncontrollably and/or act lethargic or tired. Get your dog out of the cold now.
- 2) Moderate: 90-95 degree F. Shivering is no longer possible. Your dog will lose coordination, appear clumsy, and may lose consciousness. Your dog life's is in serious danger.
- 3) Severe: 82-90 degrees F. Your dog will have troubled breathing, dilated pupils, and will most likely be unresponsive. Immediate veterinary care is necessary!

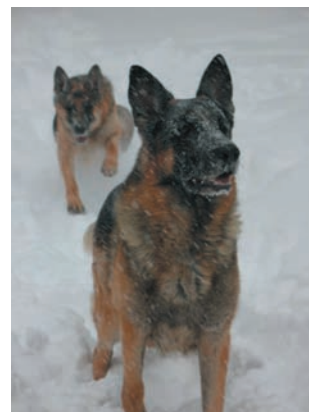
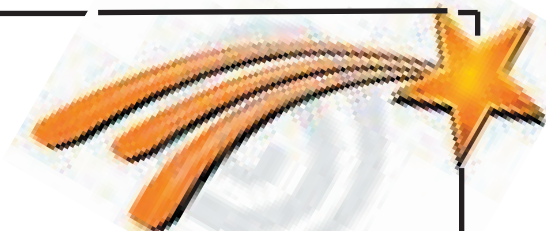
Few people carry thermometers on hiking trips, so look for external symptoms. The immediate treatment is to remove your dog from the cold and prevent further heat loss. If your dog is wet, dry him immediately with whatever is at hand: your coat, your sweater, even your shirt, if necessary. Get your dog out of the wind and to your vehicle. Seek veterinary care if your dog does not quickly show improvement or if his symptoms were severe.

Have fun with your dog this winter, but never forget that you alone are responsible for your dog's safety.

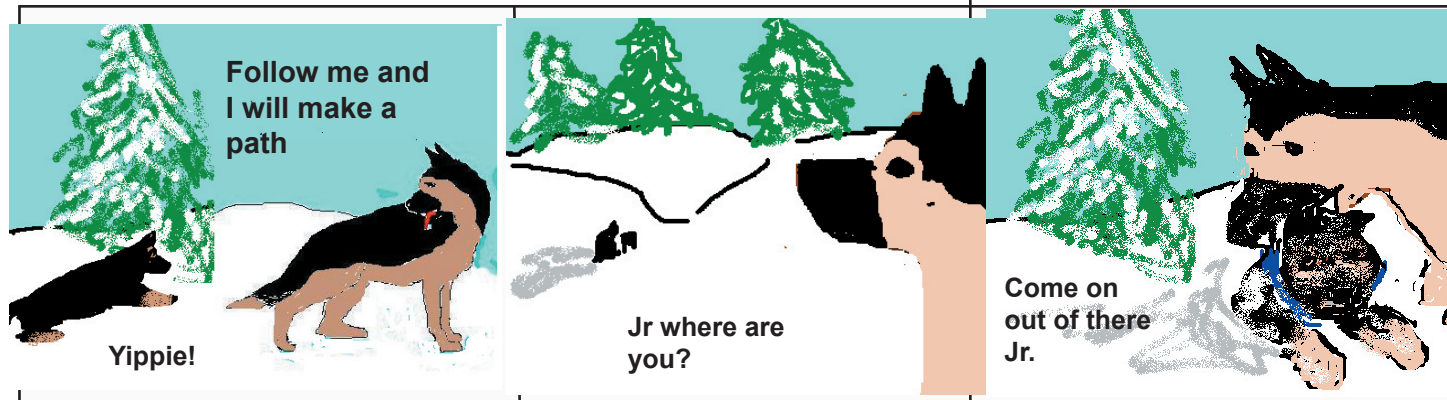
Reprinted from Examiner.com Denver

Brag

**New Grand Champion
GCH CH Willaway Mount Shasta**
Connie Karner



SOGGY by Julie Swinland



Annual Awards Banquet January 29, 2011

Joseph's Grill
140 South Wabasha
Saint Paul, MN 55107

1-2 Social Hour (Cash bar)
2 - 3:15 Buffet Lunch
3:15 Awards Program

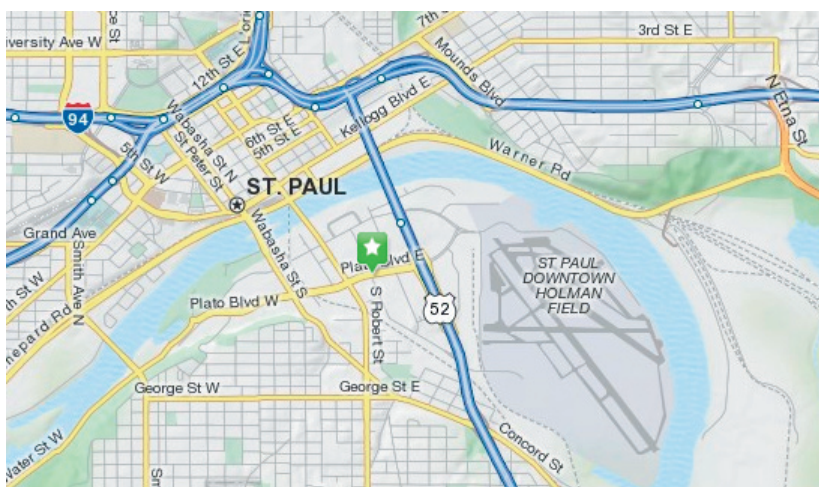
Celebrate the national wins

1st place Regional Challenge
1st Place Large club monthly newsletter
3rd place Web site
Helen Miller Fisher Received the Connie Beckhardt Award

Pricing - \$19.00 per person includes tax and gratuity; Children under 12 \$10

Buffet Menu

**House Salad - Mixed Field Greens,
Sliced Red Onion, Sliced Tomato,
Choice of Dressing**
Sliced Roast Beef
Garlic Mashed Potatoes
Mushroom Gravy
Campers Walleye
Calico Rice
Dried Cranberry-Pecan Butter
Joseph's choice of vegetable
Rolls and butter
Coffee and Cake



Directions

from north

**35 E to 52 south take Plato exit go right (west)
on Plato to Wabasha. Joseph's is on the right.
There is an entrance into the parking lot from
Plato just before Wabasha**

From South

**Take 52 north to Plato take plato exit, go left on
Plato to Wabasha. There is an entrance into the
parking lot from Plato just before Wabasha**

From East

**Take 94 west to 52 go south on 52 to Plato take
Plato exit go right (west) on Plato to Wabasha.
There is an entrance into the parking lot from
Plato just before Wabasha**

From West

**Take 94 east to 52 south take Plato exit. Go
right (west) on Plato to Wabasha. There is
an entrance into the parking lot from Plato just
before Wabasha**

Banquet Registration due by January 20th, 2011, Adults \$19 per person (includes tax and gratuity; Children under 12 \$10.

Number of attendees _____

Names of attendees _____

Amount enclosed \$ _____

**Mail Banquet Registration form and check to: Jan Anderson, 910 Kingsview Ln N, Plymouth
MN 55447-4332 by January 20th, 2011. E-mail any questions to K9TaxiJan@msn.com or
phone 763 473 8977.**

Club Events

Jan 15 Obedience Workshop at St Paul Dog Training - the flyer is on the club web site

Annual Banquet January 29, 2011 at Joseph's in St Paul, reservation form and map on page 11. Jan Anderson is the chair this year

Remember to bring a framed 8X10 of your dog for the display table if you are receiving a plaque or bar. Also send a digital photo to Bobbie Moore at Robertamoore2@mac.com

**We need a training director
Please contact one of the
officers to volunteer.**

Shep-O-Gram
1087 Allen Avenue
W. St Paul, MN 55118



German Shepherd Dog Club
of Minneapolis & St Paul

GSDC MSP Class Schedule

Obedience Classes effective July 1. 2010

Ring 1

Eileen Varhalla	
Run throughs	6:00-6:45
Intermediate Novice	7:00-7:45
Beginning Ob or Advanced Puppy	8:00-8:45
Advanced Puppy will be offered between	
Beginning Obedience blocks	

Ring 2

Lisa Marie Fortier	
S.T.A.R. Puppy Class	7:00-8:00
Jinny Bailey	
Rally Class	8:00-8:45

Ring 3

Jinny Bailey	
Competition Obedience	6:45-7:30
Various Trainers	
Jr Handlers/Puppy Conformation	7:30-8:00
Adult Conformation	8:00--8:30
Puppy Socialization -designed for breeders and owners to chat	8:30-9:00

Training Director: Sheila Metz

Sheilawm@comcast.net

651-489-7467